



BATTLE FOR JUTLAND

Fistful of TOWS 2 Scenario

by Jay Mischo

Prologue

August 23, 1988

In an attempt to draw NATO reserves and airpower away from their landings on Zealand, at the Dawn of August 23, the Soviet 37th Guards Motor Rifle division, the lead element of the 6th Combined Arms Army, launched an attack on the West flank of NATO's lines on the Jutland peninsula. Initial progress was good – the division's BMP regiment, backed by the DAG and RAG disordered several British territorial battalions, opening the door for the division's regiment of T-72 tanks to move through the gap.

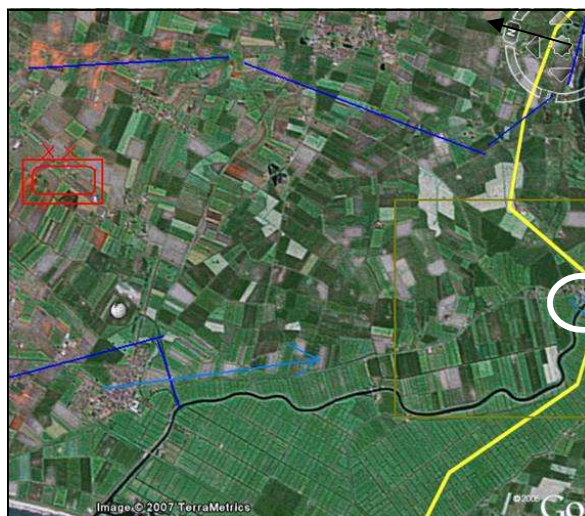
NATO had been ready for such a move. The 2nd Marine Division, in rested and in reserve since its withdrawal from Norway on day 10, was available for commitment. Elements of the division were sitting 40 miles offshore, preparing for a potential counterstroke on the west coast of Jutland. As it became clear that local reserves would not be able to stop the fresh Soviet division, CinCNORTHAG decided to commit his floating reserves.

The 6th Marine Regiment came ashore west of Hojer, north of the canal. Their landing was screened by remaining elements of the UK Territorials. Their objective – drive towards Rudbol, seizing the major bridge over the canal.

This scenario covers the initial contact, as the Marine 2nd LI Bn and the 1/6th Marines make contact with the 2nd BTR regiment as it deploys after coming across the bridge.

Scenario Map

Khaki square indicates actual battle area
Yellow line is Danish/German border
Light blue is direction of Marine thrust
The two parallel blue lines represent the bridge over the canal in the town of Rudbol.



○ = Town of Rudbol

→ = North

---▶ = Soviet advance

.....▶ = US Marine advance





BATTLE FOR JUTLAND

Fistful of TOWS 2 Scenario

SOVIET BRIEFING

Warsaw Pact Objective:

Hold both sides of the bridge at Rudbol. Keep the road west (until the junction) and north of the town clear of NATO forces.

Warsaw Pact Units

Initial

All deploy anywhere within 12 inches of Rudbol

Elements, Divisional AT Bn

2 T-12 100mm AT guns, 2 prime movers
3 BRDM-2/AT-3C

Elements, Division Headquarters

3 Rifle stands

Divisional Supply Column (includes Tank Regt supply column)

Set up south of canal

6 Gaz-66
6 URAL-375
3 URAL-375 fuelers
2 BRDM-2, 1 SA-9 (attached elements)

Elements, Divisional AA Bn

1 SA-6

1st Battalion, Divisional Artillery Group

3 2S3 Gvozdika SP 152mm guns

Artillery Battalion, 1st BTR Regiment

Set up at road junction west of Rodbul
3 2S1 SP 122mm guns

Enter south eastern map edge, turn 1

1st Bn, 2nd BTR Regiment
Tank Bn, BTR Regiment (T-72)

Enter north map edge via road, turn 2

BTR Regt Recon Co

Enter south eastern map edge, turn 2

2nd Bn, 2nd BTR Regiment

Enter south eastern map edge, turn 3

3rd Bn, 2nd BTR Regiment

Enter south eastern map edge, turn 4

AT Co: 2 BRDM-3 AT-3C

Available off-board from turn 1:

Army Artillery: 2 batteries of 130mm M-46 guns

Available off-board from turn 3:

Artillery Bn, 2nd BTR Regiment: 3 2S1 122mm SP

NATO BRIEFING

Begin On Map

Elements, HMA(L)-269: 2 AH-1T Sea Cobras

Enter Turn 1, along southwest edge of map

2nd Light Armored Infantry Regiment

HQ: 1 LAV-C
Mortar Battery: 2 LAV-M
Scout Section: 2 LAV-25 (may act as FO)
AT Section: 4 LAV-AT
3 Companies, each: 3 LAV-25

Enter Turn 2, along southwest edge of map

1/6th Marine Regiment

HQ: 1 Command Stand, 1 HMMM WV, 1 FO HMMM WV
3 Companies, each: 2 LVTP-7, 3 Rifle stands, 2 Dragon stands (attached)
Mortar Battery: 2 81mm mortar stands, 1 LVTP7
Support Elements: 2 HMMM WV w/HMG, 2 HMMM WV w/Mk19 AGL

Note: Support elements may dismount to become Mk19 AGL stand or HMG stand

Attached:

B Co, 8th Marine Tank Battalion: 3 M60A3 TTS
Section, AT Plt, 8th Marine Tank Battalion: 3 HMMM WV
TOW

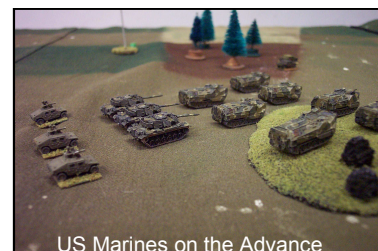
Available Turn 3 or Later

1 A-7 Corsair w/cluster bombs
1 A-4 w/cluster bombs

Epilogue; August 23

Turn 1

Moving rapidly down the road paralleling the canal, lead elements of the 2nd Light Armored Infantry battalion stumbled upon a Soviet divisional 152mm 2S3 battalion, deployed on the edge of a woodlot just north of the road. Alerted earlier to the Marine presence, the heavy guns had been redeployed to cover the road, and opened fire on the leading LAVs at about 1200 meters. However, there had been no time (or spare ammo!) to practice direct fire procedures during the run up to the war, and accuracy consequently suffered. The LAVs escaped unscathed and their return fire was devastating – the entire 2S3 battalion was wiped out in under 2 minutes.





BATTLE FOR JUTLAND

Fistful of TOWS 2 Scenario

Elsewhere, Cobras of HML(A)-269 maneuvered around the north edge of the map, seeking to interdict the north-bound road. One section spotted a battery of SA-6 Grumbles deployed to defend the divisional HQ and the road hub, and took it out with ATGMs.

During the Soviet turn, the divisional supply convoy headed north on the road, followed closely behind by the 1st BTR battalion, which began to cross the bridge in Rudbol.

Turn 2

Elements of the LAV battalion continued to advance down the road on the town, with one company moving to the north from the woodline, engaging and routing a BRDM/AT-3 in an exchange of fire. The 1st/2nd Marines, escorted by a company of M60s, entered on the west edge of the map, about 500 meters north of the east-west road.

The Soviet Divisional commander, taking advantage of divisional and front artillery assets, dropped a massive barrage across the road. While generally ineffective, the fire from the divisional MRL battalion and two batteries of long-range 130mm guns succeeded in routing a pair of LAV-AT platoons.

A marine 203mm battery, waiting in reserve, immediately fired a counter battery mission against the 130mm guns, but was unable to disrupt them.

During the Soviet movement phase, the remnants of the divisional Recon platoon entered on the north edge of the map, just behind the Marine AH-1s. With the Cobras focused on the road, autocannon fire from the BMP-2s succeeded in eliminating one of the Cobra sections and driving off the other.

Elsewhere, the vital supply convoy slowly moved up the road and the tank battalion maneuvered west along the southern edge of the map board.

Turn 3

The majority of the Marine LAVs continued to move down the road, and were engaged by the divisional AT screen deployed in the village. A battery of T-12 100mm AT guns accounted for one LAV-25 platoon, while a BRDM/AT-3 took out another. Marine counter fire succeeded in routing a BRDM/AT-3 and the radar track for the SA-6, but the two batteries of T-12, heavily entrenched in the stone buildings of the village, miraculously survived.

Incoming Soviet artillery continued to pound the main road used by the LAVs, routing both of the battalions LAV-Ms. Counter-fire from the 203mm battery succeeded in routing one of the 130mm batteries.

At the end of the fire phase, the remaining LAV-25 platoon of the first company failed its morale check and exited the battle.

During the Soviet movement phase, the T-72 battalion moved up to a treeline along the southern edge of the canal, positioning itself to take the road under flanking fire.

At this point, Marine air power arrived to bomb the convoy. An SA-9 escorting the convoy drove off a flight of A-4s, while a flight of A-7s dropped their ordnance in the middle of the convoy. However, dodging and weaving the blast, the heavily-loaded ordnance trucks managed to escape reasonably unscathed.

Turn 4

The Marine task force organized around the 1/2nd Marines continued to move east, coming into contact with the elements of the Soviet recon company. Soviet opportunity fire succeeded in routing a scouting HMMM WV. In the south, the LAV battalion's remnants began to take cover in the trees north of the road, but not before the T-72 battalion was able to knock off one of their number.

As the T-72s began to move to the southern edge of the canal, they engaged the two LAV-ATs remaining near the road. Despite the apparently one-sided nature of the contest, the LAVs managed to knock off one of the T-72s and routed another, while losing none of their vehicles.

During the Soviet turn, the last elements of the convoy exited the north edge of the map.

Final The scenario ended with the Marine player in control of the woods to the west of the town of Rudbol, but coming under increasing pressure from 2 BTR battalions deploying out of the town. On the northern half of the map, the 1/2nd Marines, with its supporting units and the remaining AH-1, prepared to deploy and drive the Recon company out of the woods to the east. However, the successful exit of the convoy assured that the Marines of the 2nd Regiment would soon be facing much of the 37th GMRD in a counterattack.

